

Ditch Quilting Foot (S)

Linda Pidzamecky, Education Consultant, Janome Canada Ltd.

Part Number: 200-341-002

The Ditch Quilting Foot is a very useful addition to your sewing machine, when you want a perfectly straight "stitch in the ditch". The guide on the foot spreads the seam allowing you to stitch perfectly in the ditch, and is also useful when adding decorative top stitching along seams. Janome sewing machines have a variety of needle positions, enabling you to position your stitching where you want.

This versatile foot may also be used with zigzag and decorative stitches, as the guide does not extend through the needle opening.

Stitching in the Ditch

Machine Setting:

Stitch:	Straight
Thread tension:	3 – 6
Stitch length:	1 – 4
Stitch width:	Center needle position



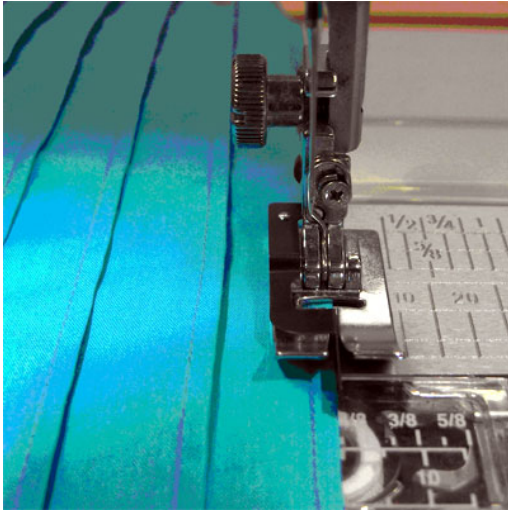
1. The 'ditch' is created when 2 pieces of fabric are seamed together. The seam allowances are pressed to one side or pressed open.
2. Set the guide on the presser foot into the 'ditch' and sew straight. The guide moves along in the seam and the stitches fall directly behind the blade. This causes the thread to be hidden in the seam, making the stitching nearly invisible.
3. This technique can be used for quilting stitched blocks, through all layers of backing and batting. Also suitable for securing facing on garments. After facings have been attached to the garment,

press to the wrong side. On the right side of the garment, in a seam that the facing is covering, set the guide into the 'ditch' and sew straight, securing the seam at the beginning and the end.

Small Tucks with a Single Needle

Machine Setting:

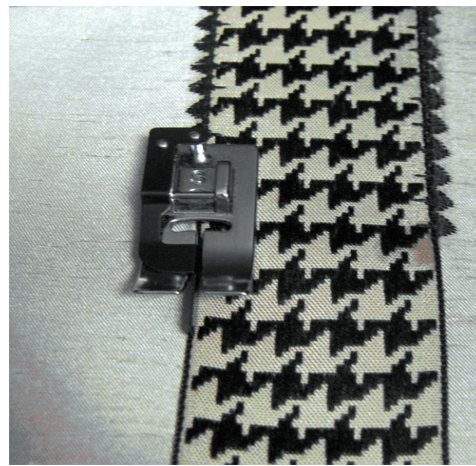
Stitch: straight:	Straight
Thread tension:	3 - 6
Stitch length	1 - 4
Stitch width	As desired for size of tuck



1. With an appropriate fabric marker, draw lines where the tucks are desired.
2. Fold and press the fabric along the marked lines.
3. Place the folded edge of the fabric to the left of the guide on the 'S' foot. Adjust the stitch width to the left to create the desired

- width of the tuck. Stitch and repeat for remaining lines. Press finished tucks to one side.
4. Tucks can be twisted to add interest to fabrics. Sew and press desired number of rows of tucks. Using an appropriate fabric marker, draw lines across the tucks evenly spaced. Stitch across tucks on every other line. Press tucks in the opposite direction between each of the stitched rows. Stitch in place on the remaining lines

Attaching Wide Trims



1. Pin, baste or use temporary spray to hold ribbon in place. Place the guide of the 'S' foot against the edge of ribbon. Adjust the needle position, until the needle drops into the edge of the ribbon. When stitching the second edge, always start at the same end as the previous side to prevent twisting of the ribbon, moving the needle position to the right.
2. Try using a decorative stitch to secure the edge. Test the stitch and its position on the ribbon to make sure it stitches through all layers.

Joining Trim and Laces



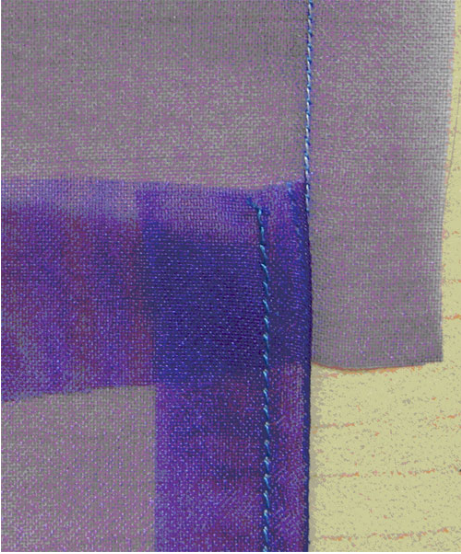
The 'S' foot is very useful for joining 2 pieces of lace or trim and attaching it to fabric. Align the straight edges of the trim on either side of the blade of the 'S'. Use a zigzag or decorative stitch to secure the edges.

Hong Kong Finish

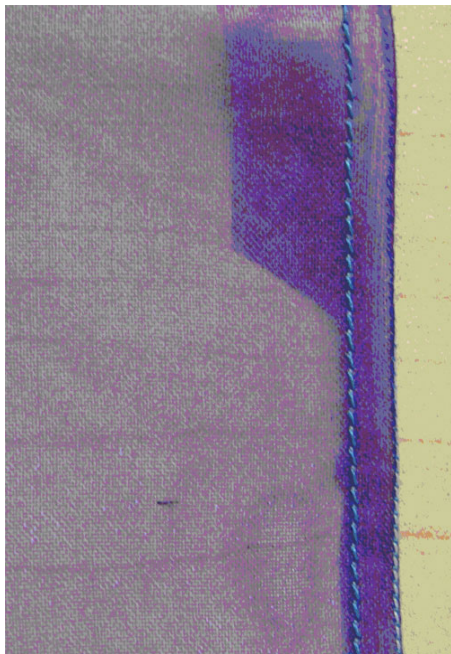


1. Cut bias strips of decorative or lining fabric 1 ½" wide.
2. Place strips on right side of fabric along raw edge and stitch together with a ¼" seam.
3. Press strips, wrapping it around the raw edge to the wrong side of the fabric. With the 'S' foot, on the right side of the fabric, stitch in the ditch, or adjust the needle position to the right, to stitch on the bias strip. If desired trim the excess on the wrong side.

Narrow Hem



1. Stitch $\frac{1}{2}$ " away from the raw edge of the fabric, using a straight stitch foot and a straight stitch plate, if possible.
2. Replace the straight stitch foot with the 'S' foot. Working on the right side of the fabric, fold the fabric to the wrong side. The straight stitch line created in step 1 will be on the fold. It's important to work on the right side as the fabric will be easier to control.
3. Place the blade of the 'S' foot long the fold. Adjust the needle position to the left approximately $\frac{1}{8}$ " and stitch length of fabric.
4. On wrong side trim excess fabric very close to stitching, careful not to cut main fabric.



5. Fold fabric again to wrong side on the stitching line. Place blade of 'S' foot along the fold and move needle position to the right to ensure all layers are stitched.