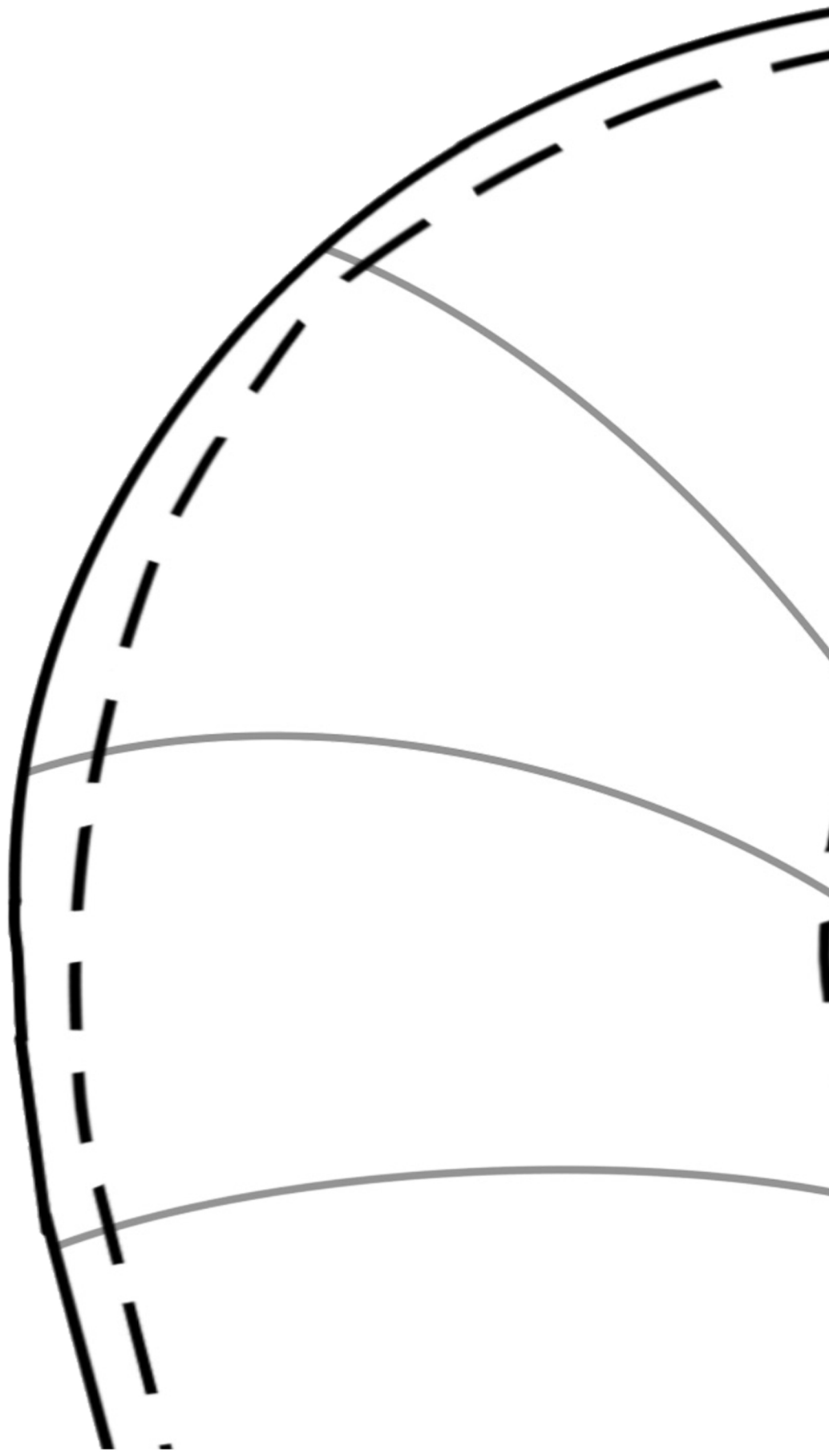
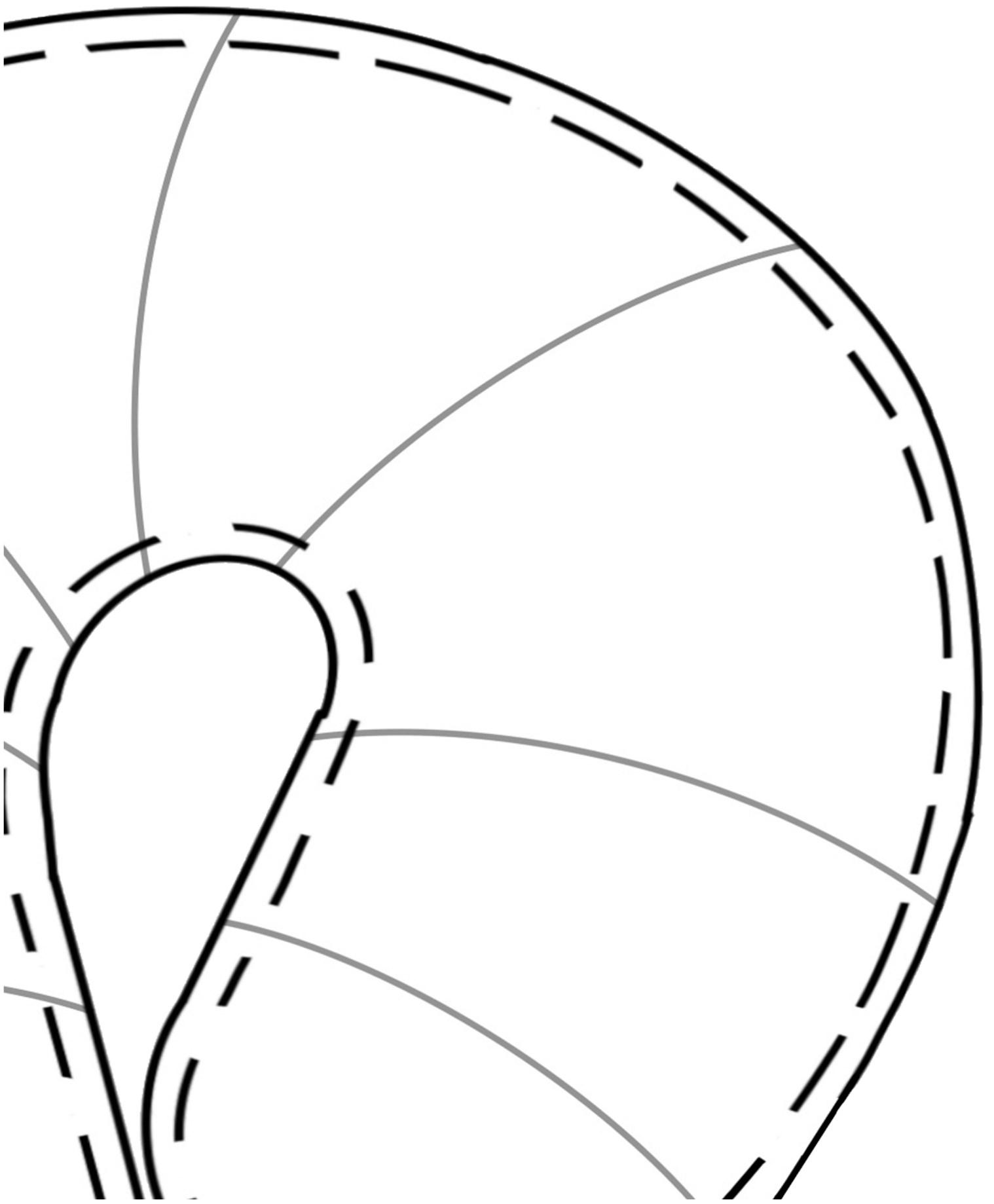


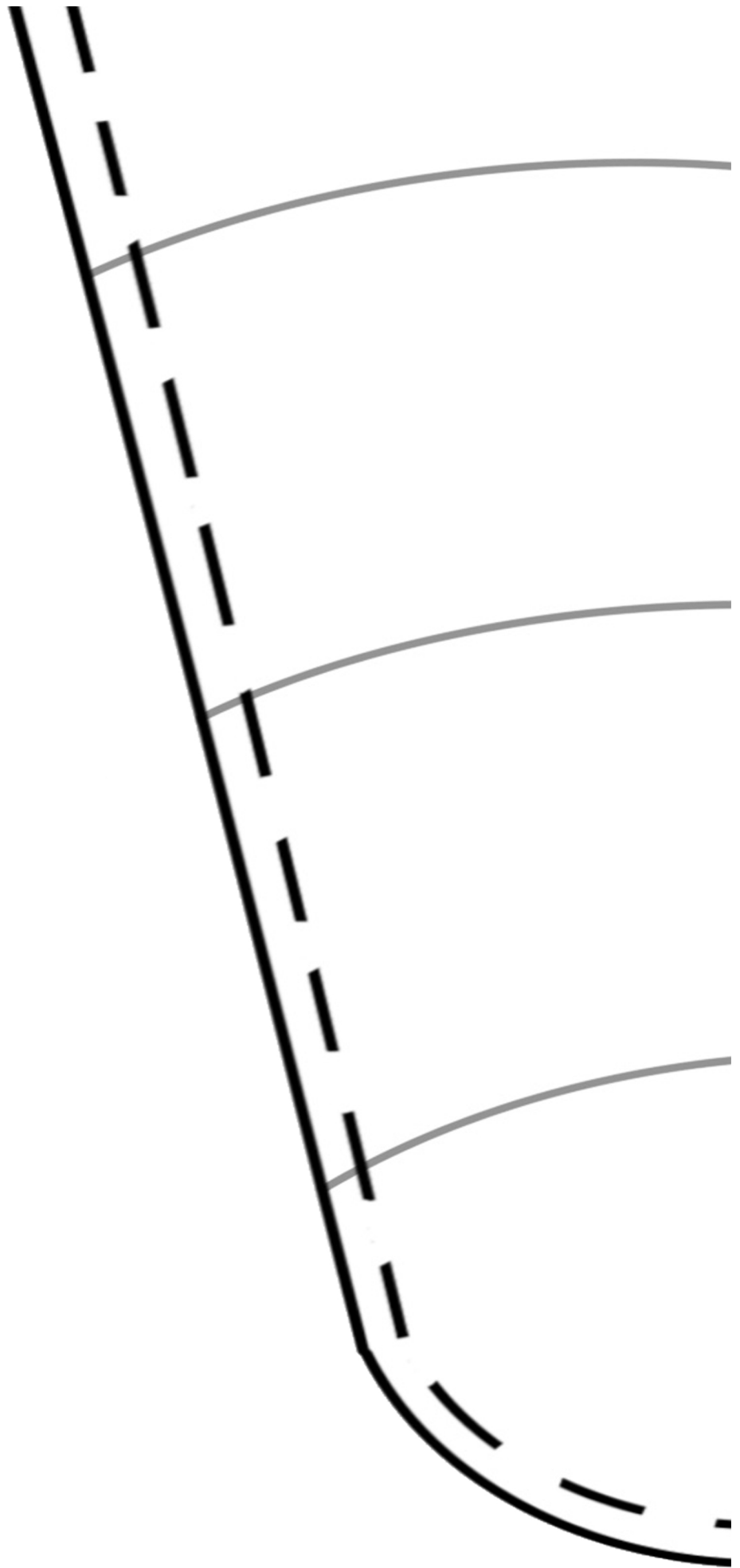
# candy cane PILLOW PATTERN

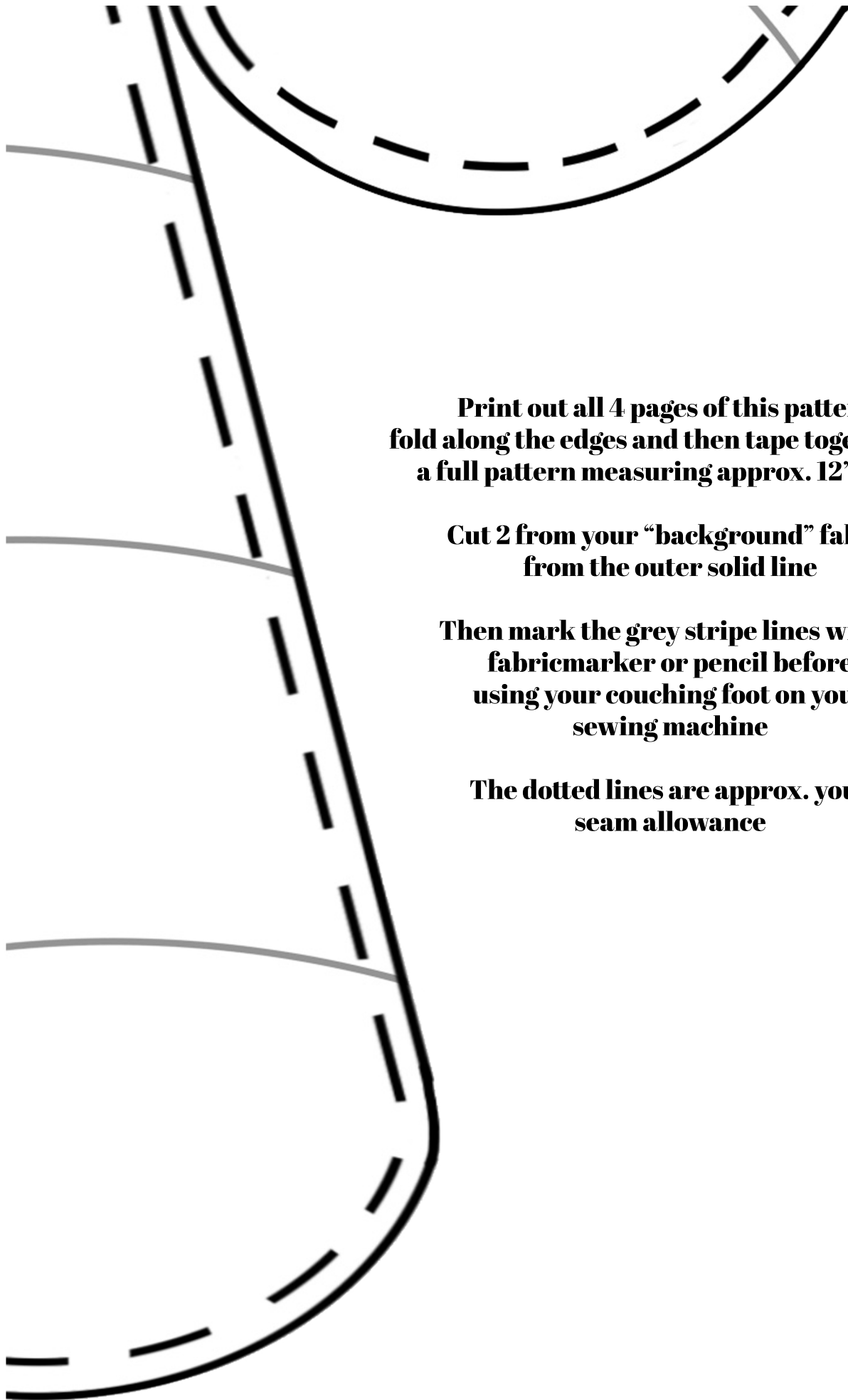
a pattern from Emily at oh yay studio

@ohyaystudio









**Print out all 4 pages of this pattern,  
fold along the edges and then tape together for  
a full pattern measuring approx. 12" x 19"**

**Cut 2 from your "background" fabric  
from the outer solid line**

**Then mark the grey stripe lines with a  
fabricmarker or pencil before  
using your couching foot on your  
sewing machine**

**The dotted lines are approx. your  
seam allowance**