

## OH CANADA! Cushion

Created by: Tamara Kate

The OH CANADA! Cushion is the first in a small series of projects created to celebrate Canada's 150th birthday in conjunction with the launch of Janome's commemorative Canada 150 – M100 QDC sewing machine. The graphic maple leaf highlighted on the cushion was designed to honour all of our country's diversity, from its land to its peoples to its rich colour and history.

The cushion is a fun weekend project that will serve as a solid introduction to both paper piecing and walking foot quilting for those that haven't yet tried the techniques, or as a refresher for those already versed therein.

**Skill Level:** Advanced beginner

**Time:** 6 - 8 hours

### Janome Supplies Required:

- Your Janome sewing machine
- AcuFeed Flex™, AcuFeed™ or Walking foot
- Craft (Satin Stitch) foot (F or F2)
- Zipper foot (E)



### Materials needed:

All fabrics listed on the accompanying Fabric Requirements page are Michael Miller Cotton Couture. Thread, scissors, acrylic ruler, rotary cutter, cutting mat, glue stick, thin metal ruler, pencil or fabric pen, tweezers, 14" cushion insert, 17" square quilt batting, dark grey machine quilting thread, red machine quilting thread, 14" dark grey or black zipper.



# OH CANADA! Cushion

All fabrics are Michael Miller Cotton Couture



**SC5333** CHERRY 1/8 yard  
COTTON COUTURE



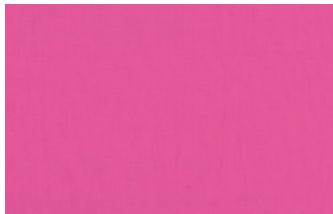
**SC5333** PETAL 1/8 yard  
COTTON COUTURE



**SC5333** CLEMENTINE 1/8 yard  
COTTON COUTURE



**CX6714** ORANGE 1/8 yard  
CHOCOLATE



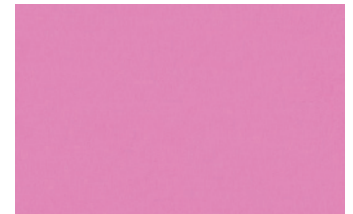
**SC5333** BERRY 1/8 yard  
COTTON COUTURE



**SC5333** PINK 1/8 yard  
COTTON COUTURE



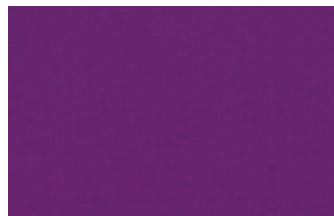
**SC5333** RASPBERRY 1/8 yard  
COTTON COUTURE



**SC5333** PEONY 1/8 yard  
COTTON COUTURE



**SC5333** LILAC 1/8 yard  
COTTON COUTURE



**SC5333** VIOLET 1/8 yard  
COTTON COUTURE



**SC5333** JEWEL 1/8 yard  
COTTON COUTURE



**SC5333** MEADOW 1/8 yard  
COTTON COUTURE



**SC5333** GREEN 1/8 yard  
COTTON COUTURE



**SC5333** LIME 1/8 yard  
COTTON COUTURE



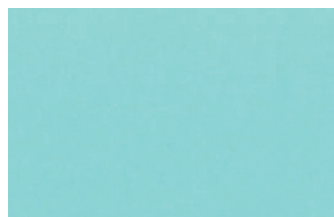
**SC5333** LIMEADE 1/8 yard  
COTTON COUTURE



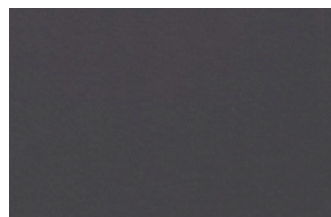
**SC5333** SPRING 1/8 yard  
COTTON COUTURE



**SC5333** AVOCADO 1/8 yard  
COTTON COUTURE



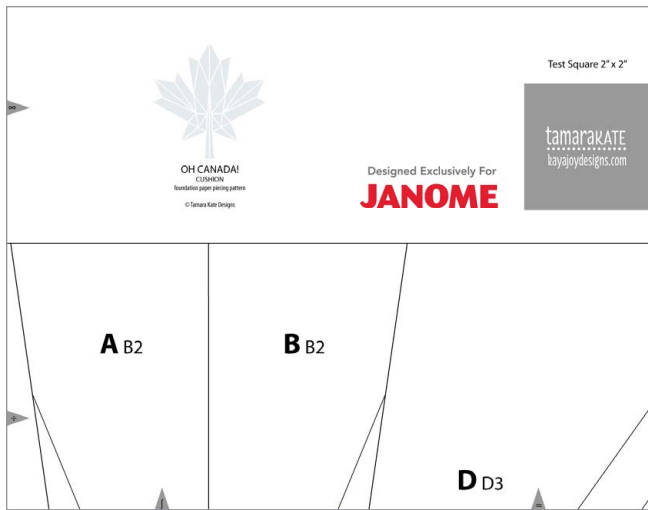
**SC5333** AQUA 1/8 yard  
COTTON COUTURE



**SC5333** CHARCOAL 1 yard  
COTTON COUTURE

Project design and instructions © Tamara Kate Designs

# OH CANADA! Cushion

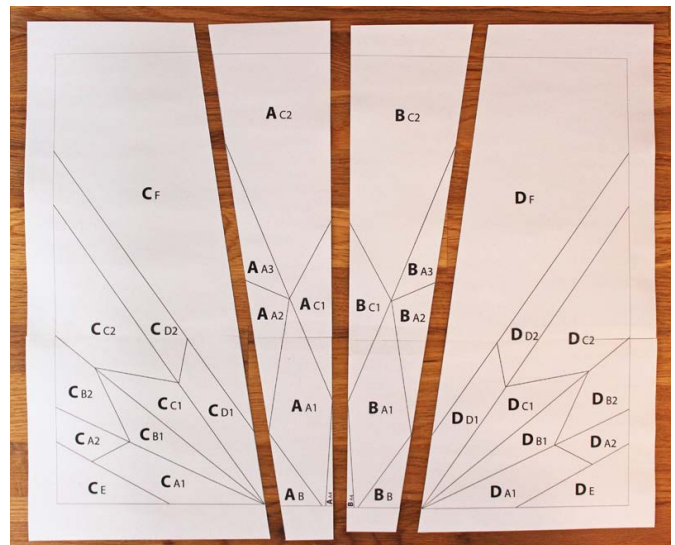


## Pattern Instructions:

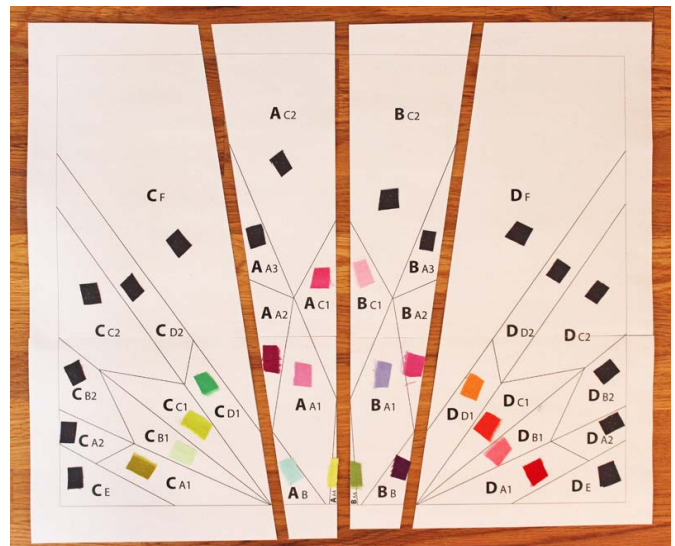
Print the accompanying pattern PDF document following these instructions:

1. Page size is 8.5" x 11"
2. Select File, then Print.
3. Set Page Scaling to "None" (do not select "Shrink to Fit")
4. Press "Print"

The 4 pages need to be cut (remove the 1/2" frame around all pages) and taped together matching the grey triangles along the edges. Try to avoid covering any of the pattern lines with tape to avoid difficulties with removing the paper later on.



The pattern is divided into 4 main sections (A, B, C and D). Each of these sections is further divided into sub-sections (eg. all the BA pieces, all the BB pieces, etc.) which denote the order for assembly. Cut along the lines between the 4 main groups of pattern pieces (all the A pieces, B pieces, C pieces and D pieces).



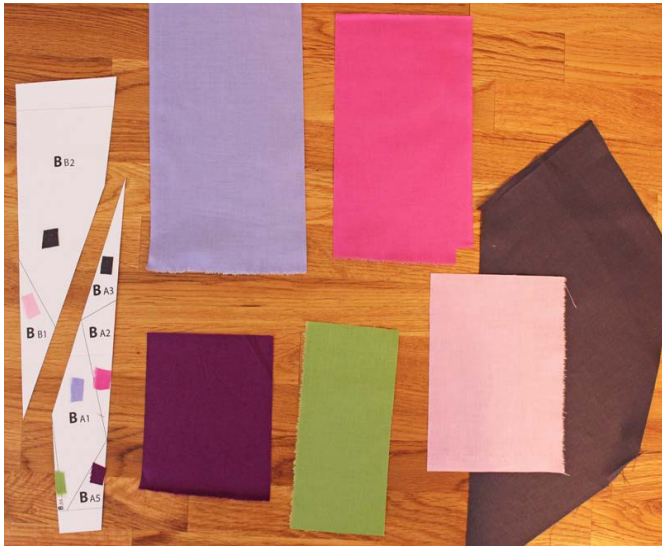
Cut a small swatch (about 1/2" square or smaller where needed) from each fabric. Cut 16 swatches of the Charcoal (ground) fabric. Using the above photo as a guide, glue swatches to their corresponding spots on the pattern (note that they are in the opposite order to the finished leaf).



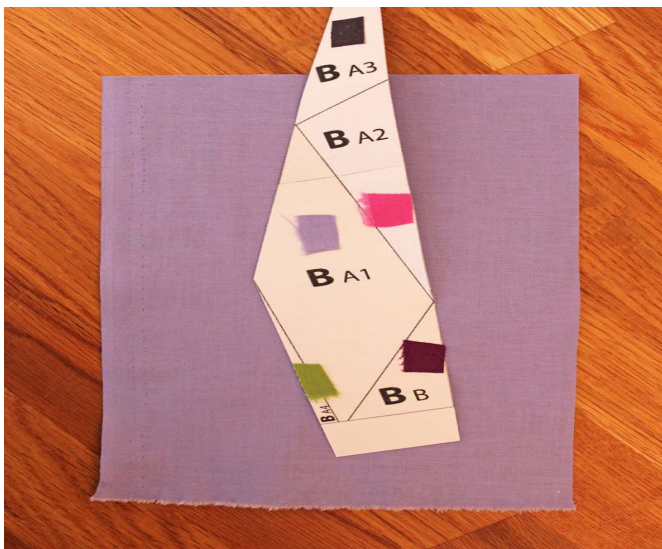
# OH CANADA! Cushion

## Piecing Instructions:

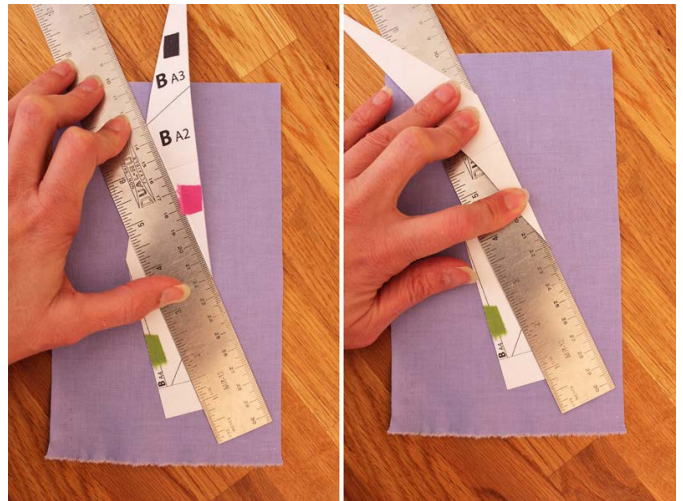
All seam allowances are  $\frac{1}{4}$ " unless otherwise stated.  
Note: The pattern does not include seam allowances. The instructions describe how to simply add the allowances as you go.



Start with the B pattern pieces. Cut the pattern along the line between the BA pieces and the BB pieces. Cut a generous piece of fabric for each pattern piece (an inch or 2 larger all the way around).



The first fabric piece in each section (in this case, BA1) is temporarily affixed (centred) to its corresponding pattern piece with a light dab of glue (about 1" square) to the back of the pattern to keep it in place.



## Step 1

The first seam to be made is between piece BA1 and piece BA2. Place the metal ruler along the line dividing these 2 pieces on the pattern. Fold the paper up crisply along this line.



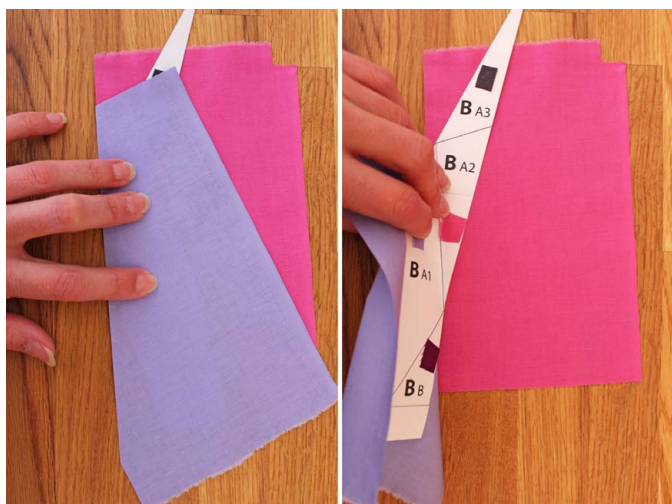
## Step 2

Remove the metal ruler and place the acrylic ruler over the top,  $\frac{1}{4}$ " beyond the folded edge. Cut the fabric along this line. Open the pattern so it lies flat again. Place the second fabric piece (BA2) under its corresponding pattern piece.

## Tamara's Notes .....

*Cutting your fabrics an inch or 2 larger all around the pattern pieces gives you lots of leeway at the beginning for seam allowances.*

# OH CANADA! Cushion



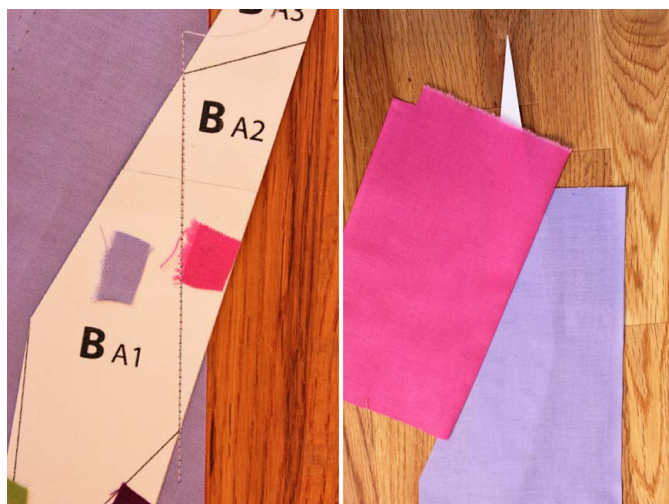
## Step 3

Hold the pattern in place on top of fabric BA2 and fold the pattern again along the creased line, flipping fabric BA1 up to the top. Cut a straight edge on fabric BA2 to align with the recently cut edge of fabric BA1. Unfold the pattern a bit to check that there is ample room around the pattern piece of fabric BA2.



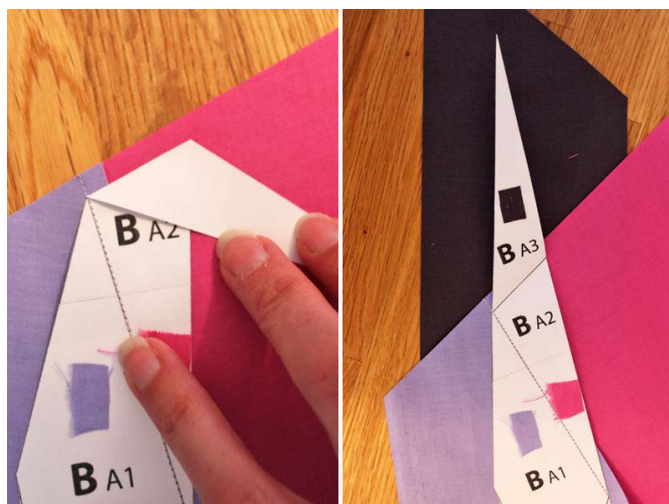
## Step 4

Mark the point along the edge of fabric BA2 where the pieces overlap. Slip fabric BA2 out from the bottom and bring it to the top (do not flip it over), lining up the 2 straight edges and the point previously marked with the corner of piece BA1.



## Step 5

Hold the pieces together, flip them over and unfold the pattern piece. Stitch along the line dividing BA1 and BA2, starting and stopping at least  $\frac{1}{4}$ " beyond each end of the line. Press the seam allowance toward fabric BA2.



## Repeating Steps 1 Through 5

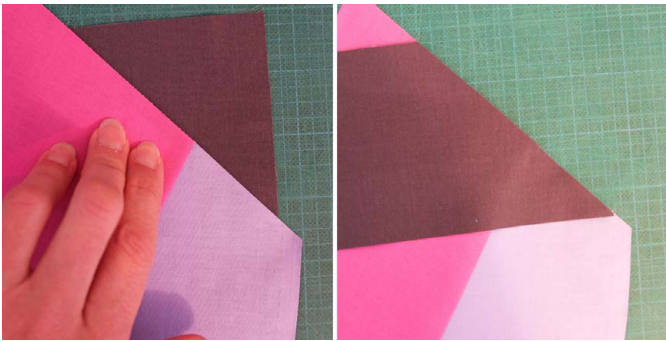
The next piece to add is BA3. Repeat Step 1, folding along the line dividing BA2 and BA3. Step 2, cut the pieced fabrics  $\frac{1}{4}$ " beyond this folded line. Unfold the pattern and place fabric BA3 underneath.

## Tamara's Notes .....

Steps 1 through 5 walk you through the basic process of paper piecing. Follow this sequence, always starting with affixing your first fabric piece to the paper, for each new section.



# OH CANADA! Cushion



Step 3, refold the pattern along the creased line, flipping the attached fabrics up to the top. Cut off the part of fabric BA3 that extends beyond the cut edge of the pieced fabrics. Step 4, mark a point where the pieced fabrics extend beyond fabric BA3 and bring fabric BA3 to the top, matching the marked point.



Step 5, Hold everything together, flip upside down and unfold the pattern. Stitch along the creased line, adding  $\frac{1}{4}$ " to each end of the seam. The F or F2 foot works well for easy-to-see piecing. Press seam toward BA3.



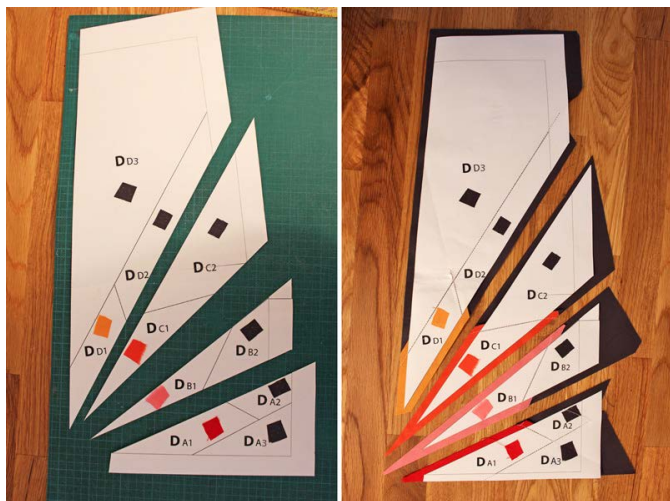
Continue in this fashion, Steps 1 through 5 for all the BA pieces. When completed, trim the pieced fabrics to  $\frac{1}{4}$ " beyond the edges of the pattern section. The paper can now be removed by holding the stitching in place with your fingernail and pulling carefully on the paper which should rip along the seam lines. Use tweezers for smaller hard-to-remove pieces.



Piece together BB1 and BB2 in the same fashion. To join these 2 sub-sections, the most important point to align is where 2 side seams intersect  $\frac{1}{4}$ " in from the edge. Place a pin straight through this point, hold fabrics together with fingers and sew the adjoining seam, removing the pin just as you get to it. Press seam toward sub-section BA.

Section A is sewn in the same fashion.

# OH CANADA! Cushion



For section D, first cut the pattern pieces along the lines between the DA pieces, the DB pieces, DC pieces and the DD pieces. Piece each sub-section as above.



Piece the sub-sections together using a pin, as above to align intersecting side seams.

Section C is sewn in the same fashion.

## Assembling the Cushion Top:



Piece the 4 sections together. Press seams open. Square up the finished block (keeping the leaf centred) to measure 15 1/2" x 12 1/2". Cut a strip of Charcoal fabric 15 1/2" x 3 1/2" and sew it along the bottom of the finished block. Your finished block should measure 15 1/2" square.

### *Tamara's Notes* .....

*When piecing some of the larger or longer pieces of fabric that have a tendency to move around, I find using a couple extra spots of glue from my glue stick to hold the fabric in place on the paper helps a lot.*



# OH CANADA! Cushion

## Quilting Instructions:

Cut a 17" square of Charcoal fabric. Press. Make a quilt sandwich with the charcoal fabric, batting and finished block. Pin or baste.



Using your AcuFeed or walking foot (if you don't have one, lower your feed dogs and manually pull your fabric through the machine), start by outlining the leaf about 1/8" outside its edges. Start and stop at the seam line at the base of the leaf.



Using your walking foot edge as a guide, continue creating consecutive stitching lines that echo out from the leaf 1/2" apart. Then go back in between the first and second quilting rows and add a row of red stitching.

Across the bottom rectangle of Charcoal fabric, quilt straight lines about 1/2" apart. Quilt 2 more lines within each of these 1/2" spaces resulting in matchstick lines.

Square up your block.

## Cushion Assembly:



Cut a 15 1/2" square of Charcoal fabric (cushion back). Press under 1/2" along one edge. Lay this edge, right side up, over one side of the zipper. Pin in place. Using a zipper foot (E), top stitch close to the zipper (if the zipper pull is in the way, raise your presser foot with the needle down and move the pull out of the way).

Press under 1/2" of the bottom edge of the quilted block. Lay this edge, right side up, over the other side of the zipper. Pin in place. Using a walking foot, top stitch close to the zipper.

Place cushion top and back right sides together. Open the zipper a bit and pin fabric sides and top together. With a 1/2" seam, stitch around the 3 sides, backstitching at each end. Clip the corners and turn right side out. Fill with pillow insert.

## Tamara's Notes .....

*With walking foot quilting, I stop and start a new row using the Auto-lock feature on my Janome machine. This secures the ends of my stitch line without having to bury threads later on.*